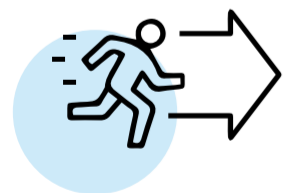


## Winter maintenance salt treatment suggestions

<b>Grip</b>	.82 - .60	.50 - .60	.40 - .50	.40 - .45.	.30 - .40	< .30
<b>Pavement temperature</b>	30 – 34° F -1 – 1° C	25 – 32° F -4 – 0° C	20 – 25° F -7 – -4° C	15 – 20° F -9 – -7° C	15 – 20° F -9 – -7° C	15 – 20° F -9 – -7° C
<b>Roadway description</b>	Dry to generally wet	Slushy to snow covered	Snow covered, perhaps wheel tracks	Snow covered, perhaps packed	Slippery, likely icy	Icy covered
<b>Action: Rising pavement temperature</b>	None	50 – 100 lbs/lnm 14 – 28 kg/lkm	100 – 150 lbs/lnm 28 – 42 kg/lkm	150 – 200 lbs/lnm 42 – 56 kg/lkm	200 – 300 lbs/lnm 56 – 85 kg/lkm	350 – 400 lbs/lnm 99 – 113 kg/lkm
<b>Action: Falling pavement temperature</b>	50 – 100 lbs/lnm 14 – 28 kg/lkm	100 – 150 lbs/lnm 28 – 42 kg/lkm	150 – 200 lbs/lnm 42 – 56 kg/lkm	250 – 300 lbs/lnm 71 – 85 kg/lkm	250 – 300 lbs/lnm 71 – 85 kg/lkm	400 lbs/lnm 113 kg/lkm



Move ahead



Mobility and beyond



The innovators



See, understand, decide

When pavement temperatures drop to 15° F (-9° C) or below, many winter road maintenance organizations use alternative chemicals: Follow manufacturer's recommendations and your own policies. Treatment rates are suggestions based on two-hour cycle times while plowing and using pre-wetted salt. Using high volumes of liquids would reduce these rates. Vaisala accepts no responsibility or liability with respect to these suggestions, and winter road maintenance organizations should follow internal policies and Levels of Service.